

# KFT® PLATE GAP-TYPE FILTER DN50

For the filtration of low and high-viscosity media

**Krone**  
Filtertechnik



## MADE IN GERMANY

... guarantees fast delivery 



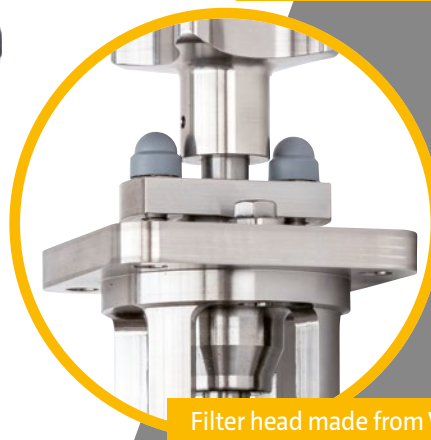
Please „click“ to  
activate the 3D model.  
(Function only available in Acrobat Reader)

### THE ADVANTAGES OF A KFT® GAP-TYPE FILTER

- easy to maintain
- long service life
- can be cleaned during operation
- works without filter aids, thereby eliminating any burden to the environment



Internal parts made of stainless steel



Filter head made from V4A

When it comes to increasing the service life of machining or process fluids, KFT® gap-type filters are a truly expert choice.



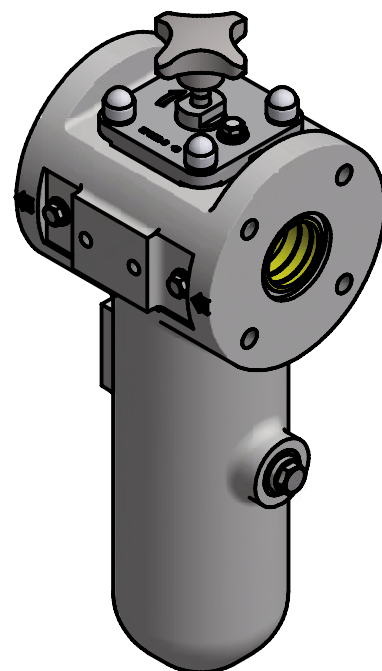
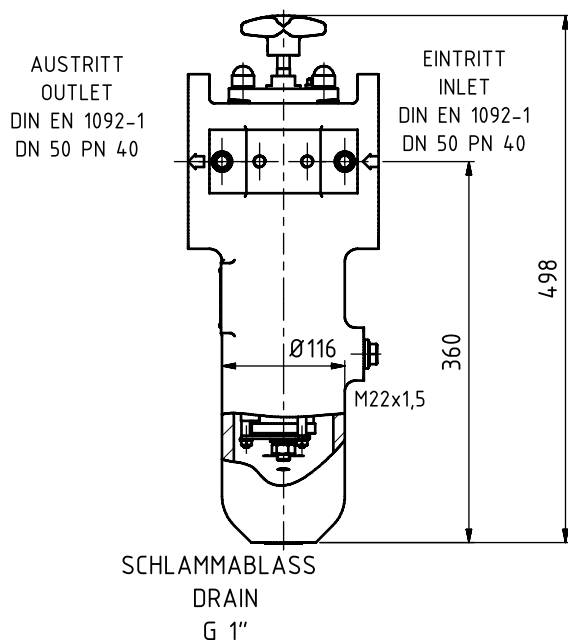
**WWW.KRONE-FILTER.DE**

#### HEAD OFFICE

Krone Filtertechnik GmbH  
Herbert-Ludwig-Str. 12-14 | 28832 Achim, Germany  
Telephone: +49(0)4202.9769-0  
E-mail: [info@krone-filter.de](mailto:info@krone-filter.de)

# KFT® PLATE GAP-TYPE FILTER DN50

## TECHNICAL INFORMATION



## KFT® PLATE GAP-TYPE FILTER DN50

Size	525
Filter fineness (µm)	100/200/400
Volume flow (m³/h) with gap width X = 0.05 mm (50 µm)	5.0 <sup>1)</sup>
Volume flow (m³/h) with gap width X = 0.10 mm (100 µm)	10.0 <sup>1)</sup>
Volume flow (m³/h) with gap width X = 0.20 mm (200 µm)	15.0 <sup>1)</sup>
Max. V (m/sec.), raw side	3.0
Max. operating pressure (bar)	40
Permissible differential pressure (bar)	6
Permissible operating temperature	-10 °C/200 °C <sup>2)</sup>
Grading acc. to DGRL 2014/68/EU	Cat. II
Conformity process acc. to DGRL 2014/68/EU	A2
CE labelling acc. to DGRL	Yes

## OPTIONS

Gear motor (ATEX optional)	230/400 V IP 55
Sludge drainage valve incl. E-drive	G1" electr./magnet.
Control system - optimised for gap-type filter	Siemens Logo T+P
Pressure differential evaluation unit + 2 measuring units	digital, max. 6 bar differential pressure

ORDER NO.	ARTICLE	HOUSING	FILTER HEAD	INT. PARTS
KF-515257x501	KFT®Plate gap-type filter DN50	GGG40	Steel	Stainless steel
KF-515257x504	KFT®Plate gap-type filter DN50	ALU	ALU	Stainless steel
KF-515257x575	KFT®Plate gap-type filter DN50	V4A	V4A	Stainless steel

<sup>1)</sup> The flow specifications apply to fluids with a viscosity of 72 mm²/s (cSt) in cases where there is a flow resistance level (delta p) of 0.2–0.4 bar. This data is applicable for a max. pollution of the medium amounting to 0.5%.

<sup>2)</sup> only GGG40 or V4A housings; in the case of ALU housing, the permissible operating temperature is -10 °C/120 °C